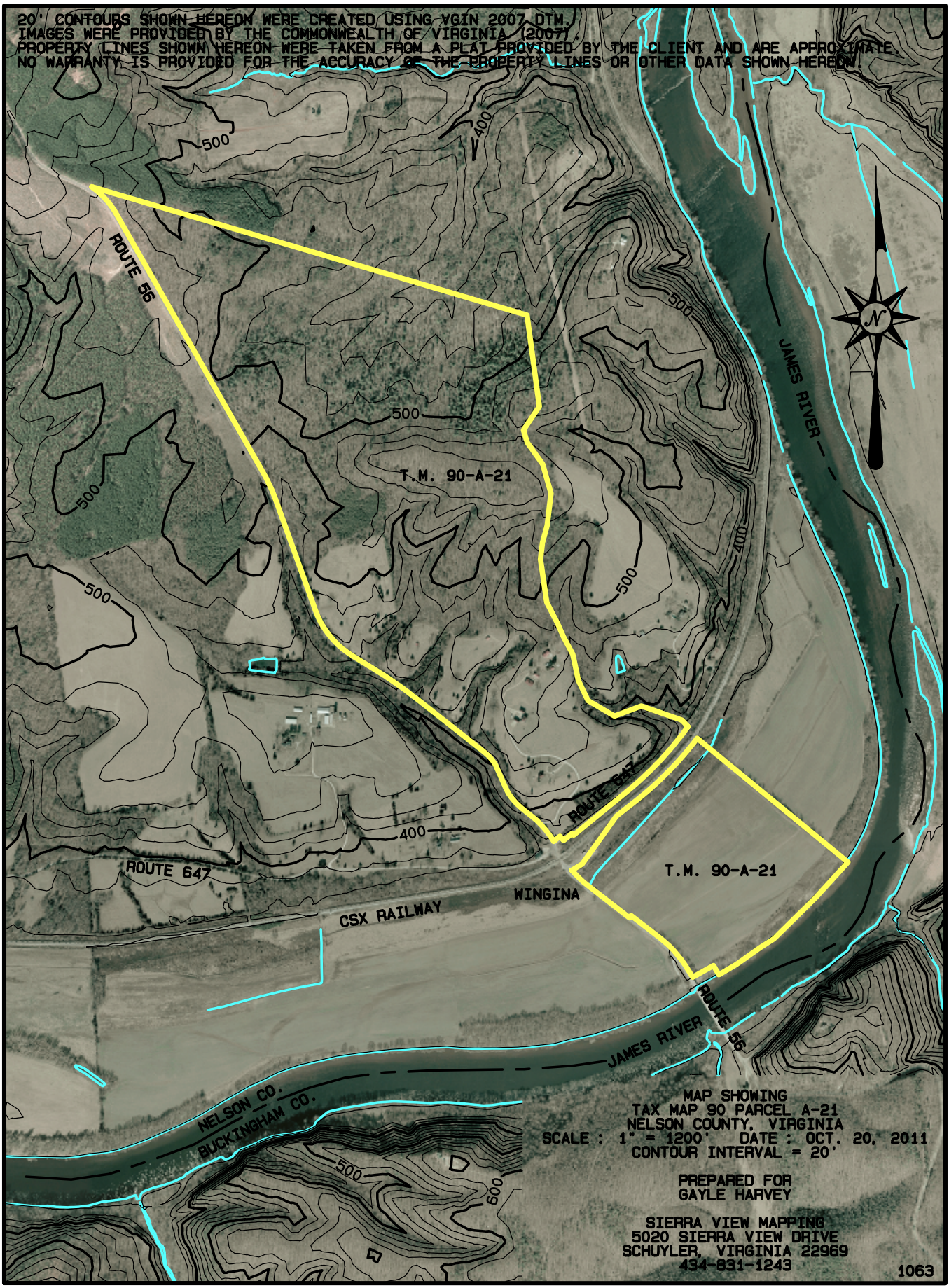


20' CONTOURS SHOWN HEREON WERE CREATED USING VGIN 2007 DTM. IMAGES WERE PROVIDED BY THE COMMONWEALTH OF VIRGINIA (2007). PROPERTY LINES SHOWN HEREON WERE TAKEN FROM A PLAT PROVIDED BY THE CLIENT AND ARE APPROXIMATE. NO WARRANTY IS PROVIDED FOR THE ACCURACY OF THE PROPERTY LINES OR OTHER DATA SHOWN HEREON.



MAP SHOWING  
TAX MAP 90 PARCEL A-21  
NELSON COUNTY, VIRGINIA  
SCALE : 1" = 1200' DATE : OCT. 20, 2011  
CONTOUR INTERVAL = 20'

PREPARED FOR  
GAYLE HARVEY

SIERRA VIEW MAPPING  
5020 SIERRA VIEW DRIVE  
SCHUYLER, VIRGINIA 22969  
434-831-1243